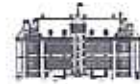


Organized by:



Kindly hosted by the Representation of the Free State of Bavaria to the European Union

PROGRAMME VERSION: 27/10/2016

FERRMED CONFERENCE

Brussels, Thursday 10th of November, 2016 (09:00-18:30)

TRANS-EURASIAN RAILWAY CONNECTIONS AND MULTIMODAL LINKS IN EU AND NEIGHBOURING COUNTRIES

*Evaluating the socio-economic challenges and opportunities of the Eurasian intercontinental growth vector.
Actions to be taken considering the "One Belt, One Road" initiative*

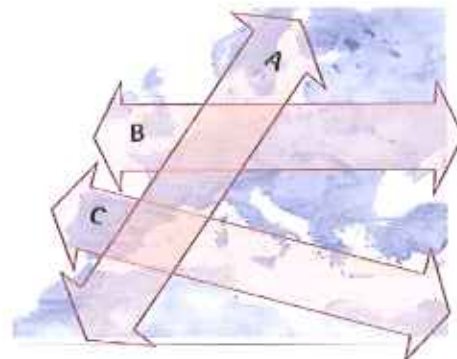
Kindly hosted by

The Representation of the Free State of Bavaria to the EU
Rue Wiertz, 77. B-1000 BRUSSELS (next to the European Parliament)

OVERVIEW

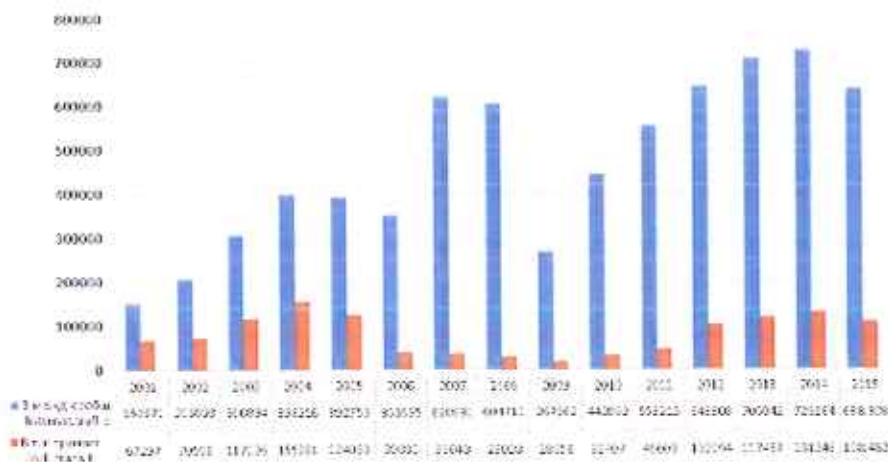
As it was stated at the FERRMED Conference on November 2015 and the subsequent Declaration, the EU and neighbouring countries are moving towards a new socio-economic model following the three emerging global growth vectors:

- A) European Union Locomotive Regions (EULER) Vector
- B) Eurasian Vector
- C) Far East/South Asia – Mediterranean Vector



Global growth vectors

The focus of this Conference will be the socio-economic development of the Eurasian Vector, through the enhancement of the railway transportation system from China to Western Europe, including the appropriate multimodal links. Recommendations regarding most suitable EU corridors to be adapted to Trans-Siberian requirements and Eurasian flows competitiveness will be presented.



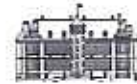
Eurasian land bridge traffic is growing steadily. In the last sixteen years the volume has moved from 71.505 to 638.828 TEUS. Most of these movements are made by railway.

Trans-Siberian rail links penetrate to Western Europe through the following Trans-Eurasian corridors (from North to South):

With the collaboration of:



Organized by:



Kindly hosted by the Representation of the Free State of Bavaria to the European Union

- Northern Axis
- Scandinavian – Mediterranean
- North Sea – Baltic
- Rhine – Danube
- Mediterranean

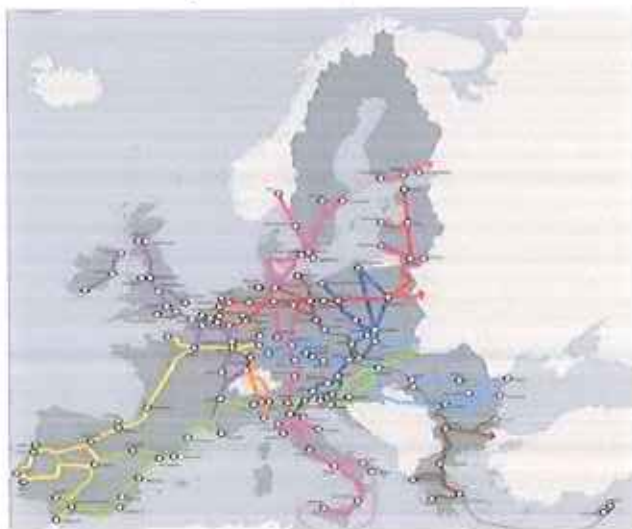
Top world experts will provide an in-depth analysis of the socio-economic impact of Asia-Europe trade on the land transportation network and future trends in the Asia – Europe transportation land bridge versus the Deep Sea Route, covering aspects such as different commodities, evolution of fuel costs, improvement of haulage modes and environmental constraints.



Trans-Eurasian land bridge main railway lines

Furthermore, infrastructure and operational development of the Trans-European corridors related to Trans-Siberian traffics, including major intermodal terminals expansion, in the EU, as well as China – Europe railway routes, will be duly examined by stakeholders, administrations and railway operators.

Reaching the final destination in such a huge land transportation network requires adequate mode combinations, such as railway-road, railway-short sea shipping and railway-barge.



Trans-European Core Network. Source: European Commission

To that end, rolling motorways and short sea shipping at Eurasian level will be duly considered.

Last but not least, the challenges of the Eurasian rail network require common and enhanced standards for freight transportation, considering harmonization of procedures and unified railway law, long and heavy trains, enlarged loading gauges, rolling stock adaptation and open data regarding freight flows. Proposals from FERRMED and other key entities on this matter will be taken into consideration.

We kindly invite you to participate in this innovative and high-level conference.

With the collaboration of:



Organized by:



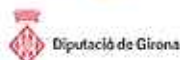
Kindly hosted by the Representation of the Free State of Bavaria to the European Union

TENTATIVE PROGRAMME (tbc)

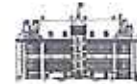
MAIN CONFERENCE TOPICS

08:30	Attendees registration – Coffee and refreshments
09:30	Welcome address <ul style="list-style-type: none">Ms. Barbara SCHRETTNER, Director of the Representation of the Free State of Bavaria to the EU Opening Session <ul style="list-style-type: none">Mr. Herald RUIJTERS, Acting Director MOVE B Investment, Innovative & Sustainable Transport and Head of Unit B1 Transport Networks, European CommissionMr. Ramón Luis VALCÁRCEL-SISO, Vice-President of the European ParliamentMr. Wang HONGJIAN, Minister of the Chinese Mission to EUMr. Jean Pierre LOUBINOUX, Director General, UICMr. Santiago GARCIA-MILÀ, President, IAPHMr. Ralf-Charley SCHULTZE, President, UIRRMr. Josef DOPPELBAUER, Executive Director, ERAMr. Joan AMORÓS, President, FERRMED
10:50	PRESENT AND FUTURE CONDITIONS Keynote speeches The importance of Asia – Europe trade worldwide <ul style="list-style-type: none">Mr. Markus FERBER, MEP, Vice-Chair EP of the Committee on Economic and Monetary Affairs The socioeconomic impact of Asia – Europe trade on the land transportation network <ul style="list-style-type: none">Mr. Jerzy KLENIEWSKI, Chairperson Inland Transport Committee, UNECE (tbc)Ms. Luisa SANTOS, Director of International Relations, BUSINESS EUROPE China-Europe railway routes: Infrastructure and operational development considering the “One Belt, One Road” initiative. <ul style="list-style-type: none">Mr. Gennady BESSONOV, Secretary General, CCTTChinese Company/Administration representative (tbc)
11:40	Asia – Europe Transportation Land Bridge versus Deep Sea Route Keynote speech Environmental considerations <ul style="list-style-type: none">Mr. Daniel CALLEJA, Director-General for Environment, European Commission

With the collaboration of:



Organized by:



Kindly hosted by the Representation of the Free State of Bavaria to the European Union

Introducer and moderator

- Lord Tony BERKELEY, Chairman, Rail Freight Group

Panellists

Future trends in transporting different commodities

- Mr. Thierry VANELSLANDER, Professor, Department of Transport and Regional Economic, University of Antwerp

Future trends in fuel costs

- Mr. Bart WIEGMANS, Civil Engineering and Geosciences, Delft University of Technology

Future trends in the evolution of transportation modes

- Mega container vessels
- Mr. Mark DIJK, Program Manager, Port of Rotterdam
- Longer freight trains
- Mr. Louis DELVIG, Direction Innovation FRET, SNCF

Impact in trans Eurasian railway transportation

- Mr. Thomas SIEFER, Professor at the Technische Universität Braunschweig

12:40

Networking Lunch

13:40

ACTIONS TO BE TAKEN

Infrastructure and operational development of main Trans-Eurasian Railway Corridors in the EU (bottlenecks solving, links with neighbouring countries, hubs and intermodal terminals)

Keynote speech

- Mr. Michael CRAMER, MEP, President of the EP Committee on Transport and Tourism
- Possibilities of adaptation to Trans-Sib traffic requirements in EU penetration corridors

Moderator

- Mr. Francisco GARCÍA CALVO, Deputy Secretary General, FERRMED

Panellist

Northern Axis

- Mr. Nils ALM, Strategic Planner, Swedish Transport Administration, Northern Region

North Sea – Baltic

- Mr. Alberto GRISONE, Director Shuttle Net East Europe & Far East, HUPAC Intermodal SA

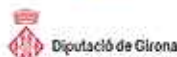
Rhine – Danube

- Jean-Marc Hillenberg, Chairman, Coordination Group Rail Freight Corridor Rhine – Danube, ÖBB-Infrastructure

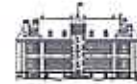
Mediterranean

- Mr. Josep Maria ROVIRA, Secretary General, FERRMED / Mr. Eugenio NOVARIO, Head of Italian Branch, Railway Silk Road Cities Forum

With the collaboration of:



Organized by:



Kindly hosted by the Representation of the Free State of Bavaria to the European Union

- Trans-Sib Mega Terminals in the five more important Mega-Regions in the continental EU. Location recommended conditions and characteristics

Introducer and Moderator

- Mr. Joan AMORÓS, President, FERRMED

Panellist

Duisburg zone

- North Rhine – Westphalia Region representative (tbc)

Rotterdam zone

- Mr. Don VAN RIEL, Managing Director, Trimodal Europe

Milan zone

- Mr. Lanfranco SENN, Professor, Bocconi University

Barcelona zone

- Cristian BARDAJI, Deputy Director General, Barcelona-Catalunya Centre Logistic, and Director of Infrastructure studies, Barcelona Chamber of Commerce

Lyon zone

- Mr. François LÉPINE, Delegate President, La Transalpine

Manheim zone

- Rhine-Neckar Regional Association (tbc)

Vienna zone

- Mr. Viktor PLANK, Expert of Infrastructure, OBB - Infrastructure

15:30 Coffee break

15:55 Railway- Sea combination in Eurasia

Introducer and moderator

- Ms. Isabelle RYCKBOST, Secretary General, ESPO

Panellists

Baltic Sea

- Ms. Annaleena MÄKILÄ, Managing Director, Finnish Ports Association

Northern Sea

- Mr. Frank GEERKENS, Port Ambassador, Port of Antwerp

Black Sea

- Mr. Valeriu Nicola IONESCU, Director General, Port of Constantza

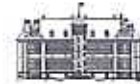
Mediterranean Sea

- Mr. Jordi TORRENT, Strategy Manager, Port of Barcelona

With the collaboration of:



Organized by:



Kindly hosted by the Representation of the Free State of Bavaria to the European Union

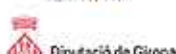
16:45	Services providers and Railway operators in Eurasian Routes Introducer and moderator <ul style="list-style-type: none">Mr. Gennady BESSONOV, Secretary General, CCTT Panellists <ul style="list-style-type: none">Mr. Bernd OTTMANN, Member of the Board, InterRailMr. Uwe LEUSCHNER, Vice-President Business Development Region East, DB Cargo AGMr. Peter BASKAKOV, CEO, Trans Container (tbc)Mr. Vyacheslav PAVLOVSKIY, Vice-President of International Relations and Foreign Economic Affairs, RZD OJSCMs. Belinda KOLAGO, Advisor, Kolago ConsultingChina Railway Corp. representative (tbc)Mr. Alberto GRISONE, Director Shuttle Net East Europe & Far East, HUPAC Intermodal S
17:50	Common and enhanced standards for Eurasian rail freight transportation Introducer and moderator <ul style="list-style-type: none">Mr. Joan AMORÓS, President, FERRMED Panellists <ul style="list-style-type: none">Harmonization of procedures/unified railway law<ul style="list-style-type: none">Mr. Christoph KAUPAT, Interoperability Unit, ERALong and heavy trains and enlarged loading gauges<ul style="list-style-type: none">Mr. Armand TOUBOL, Vice-President, New OperaRolling stock adaptation<ul style="list-style-type: none">Mr. Armando CARRILLO, EURNEX General Secretary and Scientific Researcher, Technische Universität BerlinRolling motorways<ul style="list-style-type: none">LOHR Industries representative (tbc)
18:30	Closing remarks <ul style="list-style-type: none">Lord Tony BERKELEY, Chairman, Rail Freight Group
18:40	End of the Conference

LANGUAGES OF THE CONFERENCE

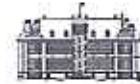
English, French and Spanish

Simultaneous translation will be available

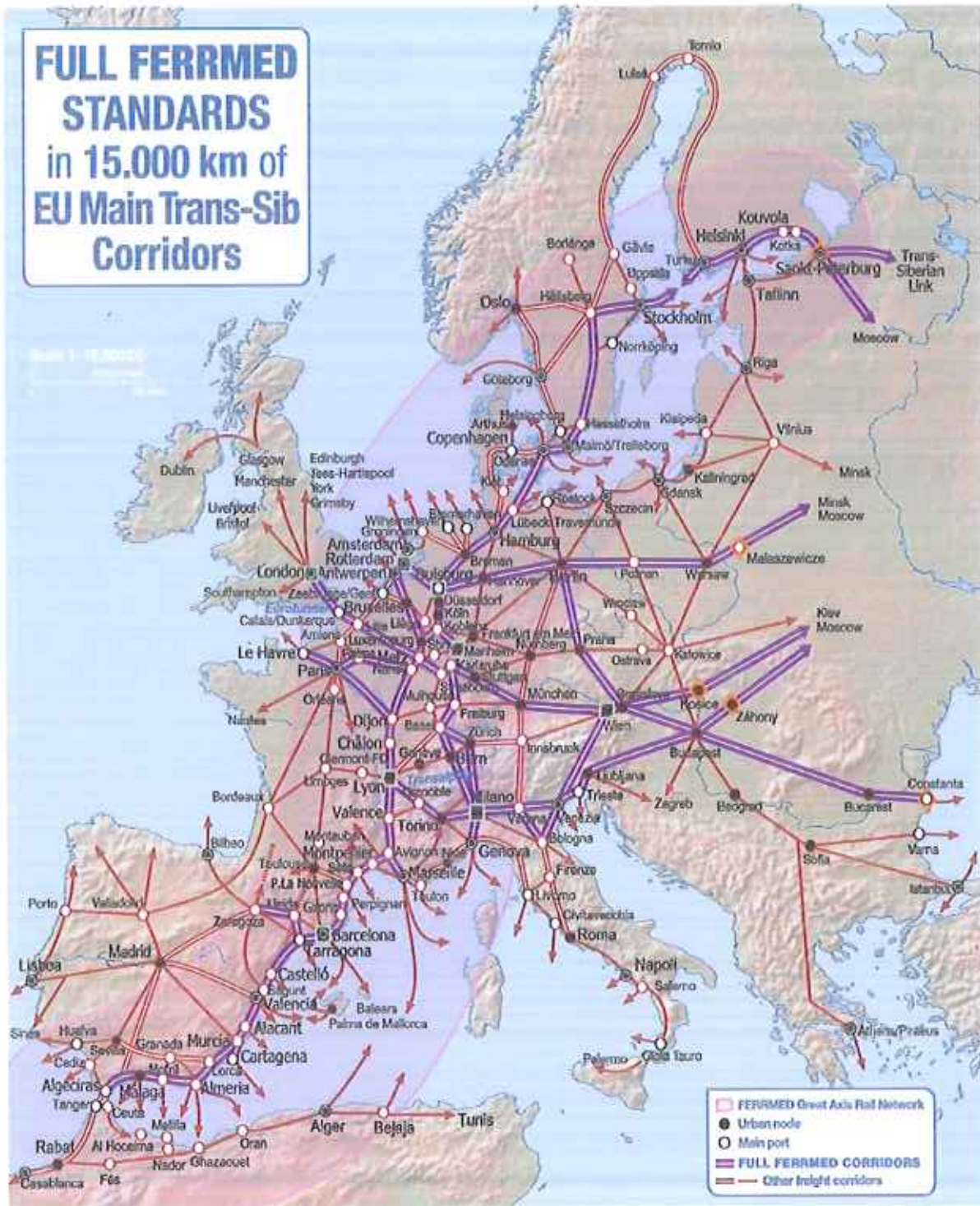
With the collaboration of:



Organized by:



Kindly hosted by the Representation of the Free State of Bavaria to the European Union



- Trans-Sib Strategic Mega-Terminal (First priority)
- ◇ Trans-Sib Transborder Terminal

With the collaboration of:

